

THE ELWOOD BUILDING SUSTAINABILITY

- NORM (Natural Organic Recycling Machine) wastewater recycling
- Transportation including MAX light rail, Portland Streetcar and bike-friendly streets
- EV charging stations on site
- Two dedicated ZipCars on site
- GoLloyd transportation experts at your doorstep

HASSALO NEIGHBORHOOD

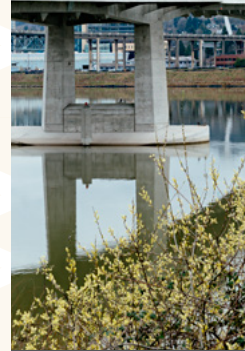
- Green Zebra Grocery, Café Yumm and Orangetheory Fitness on site, along with Heart Pizza, Little Big Burger and Garden Bar coming soon
- Biker's paradise with a bike score of 100
- Over 1,000 bike parking stalls with access to bike valet and repair
- 1,200+ underground parking stalls
- 24-hour on-site security
- Smoke-free community
- LLoyd Farmer's Market, open year-round
- Walk to Moda Center and Oregon Convention Center
- Steps to the Portland Streetcar, TriMet's MAX line and most major bus lines



GET CONNECTED

HassaloOnEighth.com/The-Elwood-Building

503.416.1976



STAY CONNECTED

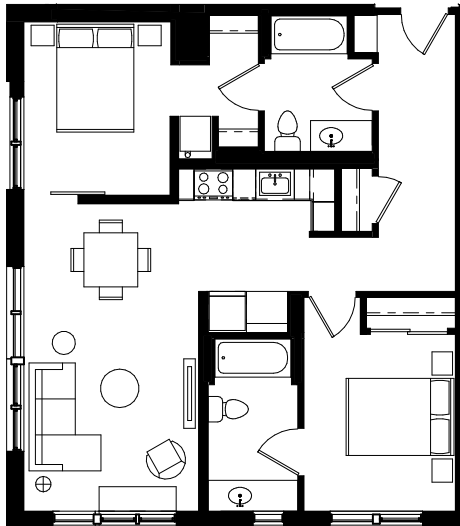
EVERYTHING YOU WANT IN AN URBAN HOME

At The Elwood Building, reduce your stress by living where you work, play and eat. With five stories and 143 apartments featuring studio, one and two bedroom floor plans, there's room to stretch out.

We've got you covered on the eco-friendly front with easy access to alternative transportation, leading tech practices in the conservation of energy and water, and a respectably small carbon footprint. So go ahead; enjoy the beautiful finishes; the extra light from open floor plans; the energy-efficient appliances, and relax with friends in your LEED Platinum certified building.

Live the green life.

TWO BEDROOM PLAN



INTERIOR FEATURES

- Euro-style cabinetry with contemporary hardware
- Quartz countertops throughout
- GE energy-efficient appliances
- Natural stone backsplash in kitchen and bath
- Ceramic glass cooktops
- Energy-efficient washer & dryer
- Contemporary lighting package
- Chrome stainless-steel fixtures
- Open-style floor plan with energy-efficient floor-to-ceiling windows*
- LVT plank flooring throughout
- Walk-in closets*
- Choose from Fibersphere, Comcast, CenturyLink and DirecTV for cable/internet
- Air conditioning
- Continuous fresh air stream, filtering outside air even with windows closed



BUILDING FEATURES

- On-site concierge
- Community lounge with Wi-Fi
- Dog and cat friendly, no weight or breed restrictions
- Outdoor pet relief area
- Composting
- Trash chute & recycling on every floor
- Controlled-access underground parking

*Select units

